

Pre-Fabricated Building Updates



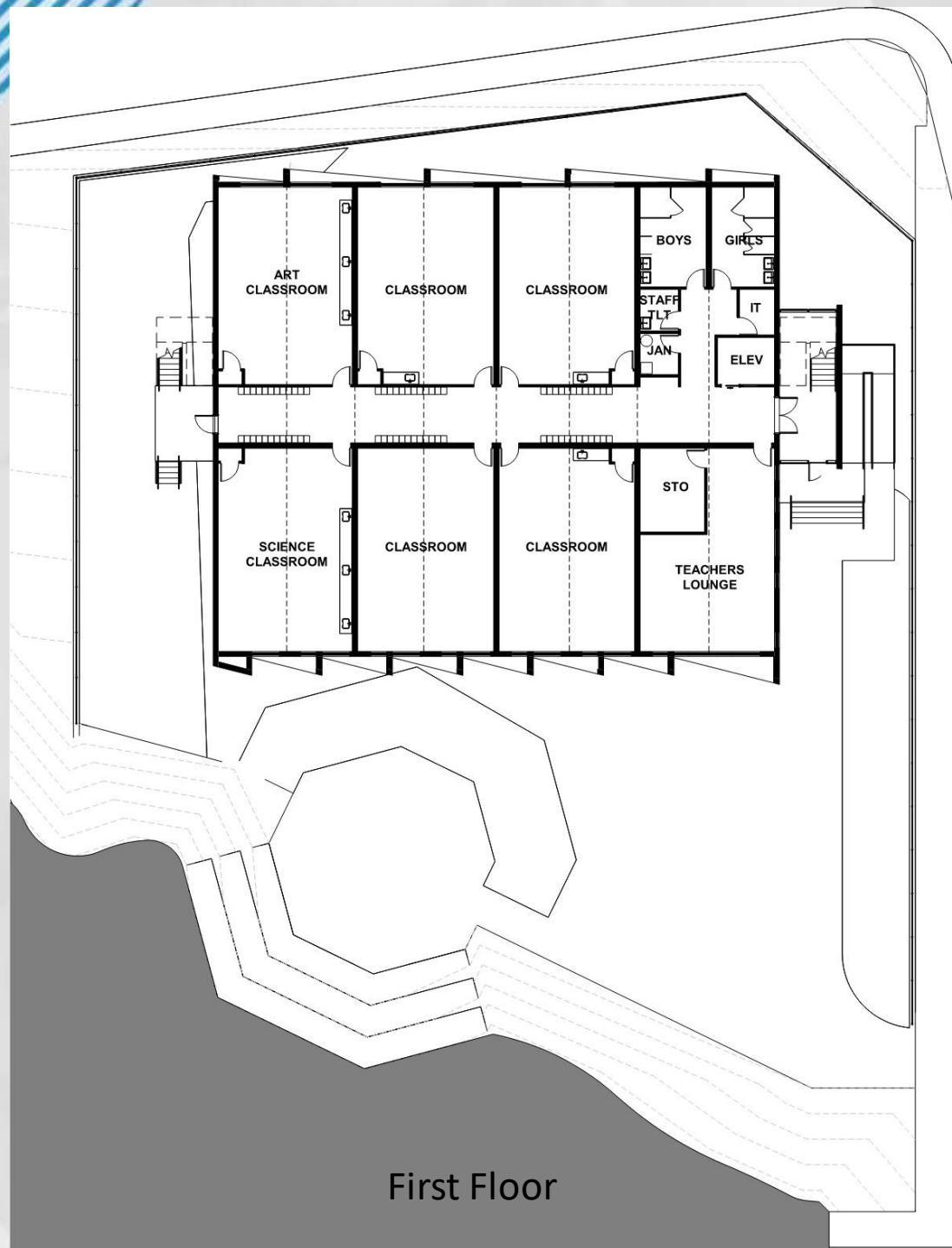
BALTIMORE CITY
PUBLIC SCHOOLS

Proposed Site Plan

Retains the outdoor classroom area and some blacktop



Proposed Plan

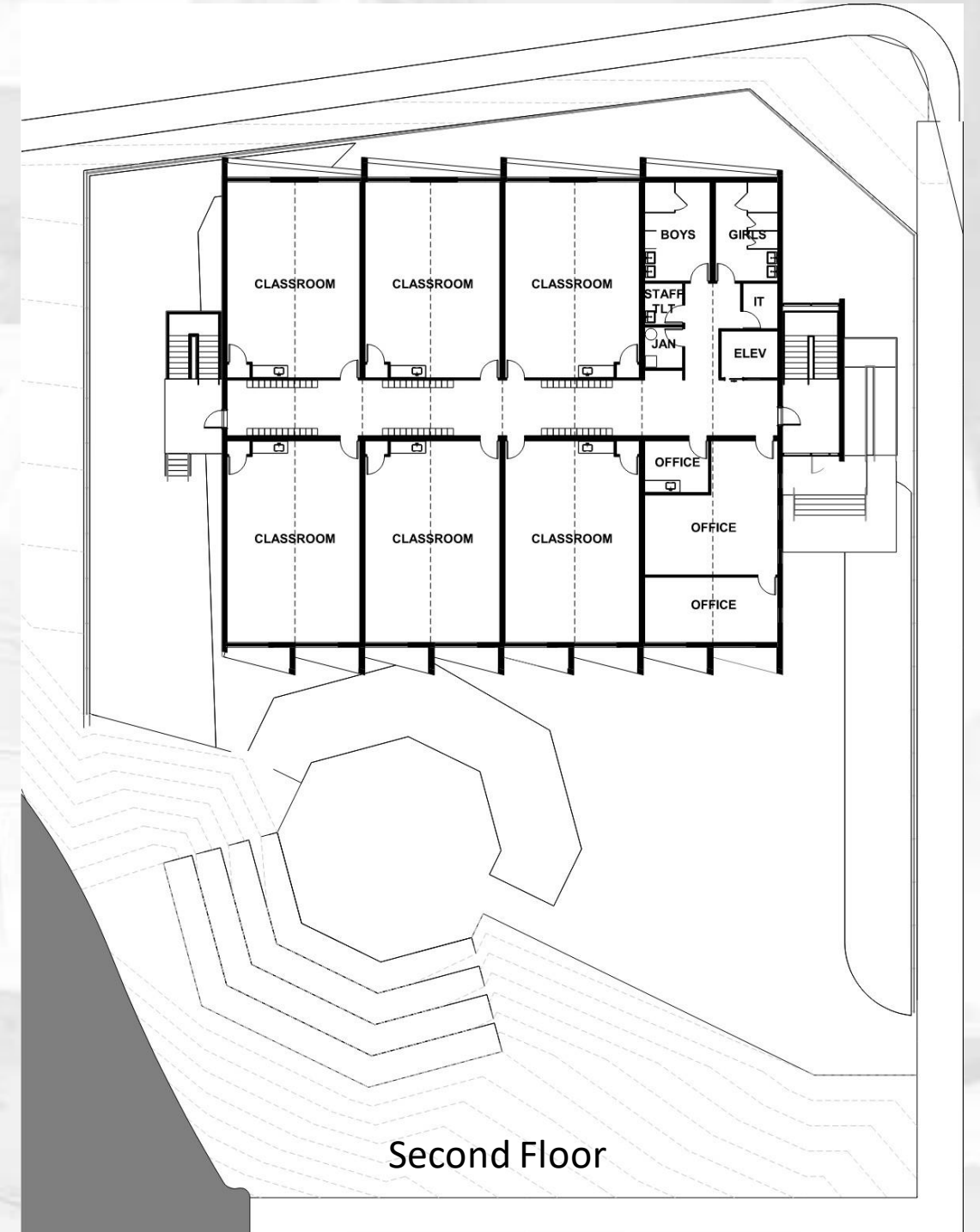


First Floor

2 levels
12 classrooms,
for 6th 8th grade
students

Administrative
spaces

15,700 sf



Second Floor

Proposed Elevations

**Wood-look phenolic
panel rainscreen**
**Fiber cement
rainscreen**
Storefront Windows



BALTIMORE CITY
PUBLIC SCHOOLS

Proposed Elevations



From Kelly and Lochlea



From Sulgrave and Lochlea



From Sulgrave